

# Walk 7: Meir Heath to Tittensor

## Essential info

Distance	12.5km/ 7.75 miles
Category	Easy, an intimate walk through pleasant undulating countryside and villages with good views.
Maps	We used OS Explorer 258
Getting there	Take the 6 from Hanley Bus Station (every 20 minutes). Get off at the top of Meir Heath.
Midpoint	There is an opportunity to break your journey at Barlaston where the Baker Bus 350 or X1 can take you back to Hanley or the less frequent D&G 48 can take you to Longton, where you can change for Hanley.
Getting back	At Tittensor take the First 101 (every 20 minutes) from the other side of the A34(T) Stone to Hanley Road.
Ticket	You can get a First Day or a Smart Ticket for this walk.
Time	Meir Heath - Moddershall 1 hour Moddershall – Oulton 1 hour Oulton – Barlaston 1 hour Barlaston to Tittensor 20 minutes

## Route

From Meir Heath walk down the B5066 south toward Hilderstone, after **0.5km** take the footpath on the right, downward and out onto fields. As the path splits bear left and follow the footpath over fields (passing a ornamental pool) until it exits onto a country road (Knenhall Lane) **1.5km**. Turn left downhill and follow the country lane, bearing left into woodland. Walk the lane through the woodland to Moddershall **2km**. We took coffee on a memorial bench in the churchyard here, but the Boar does lunches. From the village pond walk southward to the red telephone box and turn right into Mill Lane and follow the country road past Splashy Mill to the main A520 road **1.5km**. Cross the A520 and take the country road opposite (signed Oulton); bear left onto the Kibblestone Road, pass the Kibblestone Scout Camp and into Oulton Village **1.5km**. There are two pubs in Oulton; The Brushmakers and the Wheatsheaf, but it was too early for our lunch so we pressed on. Before the pubs (on the left as you enter the village) there is a footpath on the right, it leads uphill into fields, follow it across two fields and out onto a county lane. Turn left and follow the lane downhill to a junction, with a lane on the left and a footpath on the right take the footpath on the right and cross fields until you exit at the Ford, Barlaston Common **1.5km**. Cross the ford and enter Barlaston Downs, there are various routes through and you can choose any of them but we took the valley walk keeping the stream on the left until the end of the Downs then went left, uphill to the exit point (signed Barlaston). Continue along the footpath cross a large arable field and into the grounds of a country house (Upper House) until the path exits onto the road in Barlaston village **2km**. Turn left and walk down the road, passing the Wedgwood College, cross the railway line and the canal to the Plume of Feathers Pub **0.5km**.

**Pictures from top: Moddershall Church, Oulton pubs, grazers in Barlaston, path on Barlaston Downs**





## Lunch

This is a short walk and it depends on when you start is as to where you want to take lunch. We started at 10.00am and were too early for the Boar in Moddershall or the Brushmakers or Wheatsheaf in Oulton so we stopped at the Plume of Feathers in Barlaston. It has a nice airy lounge bar with a selection of real ales and a good range of food. As we were walking it was good to see a 'light bite' menu - I had the burger and chips, which was very good and Wendy had a cheese and onion baguette which was also exactly what was needed.



## After lunch

Carry along the road through the village houses and across a field to the A34 (T), which you cross and get the First 101 bus back to Hanley **1.5km**.

## Waiting for the bus

There is only one bus and it runs every 20 minutes.

**Top: The Boar at Moddershall.**

**Bottom: The Plume of Feathers, Barlaston.**

## Places to stop

This walk takes you though all the villages on route and any of them are worth exploring. We detoured slightly at Moddershall to drink our coffee in the churchyard; Oulton is a pleasant village while you could easily lengthen the walk and spend more time on Barlaston Downs. The Wedgwood Factory Visitors Centre is in Barlaston, but it is quite big and you'd not do it justice by 'popping in' as part of a walk.

## Nature interest - We walked this in early August

### Wildflowers

- Angelica
- Arram
- Enchanter's nightshade
- Feverfew
- Greater celandine
- Herb Robert
- Himalyan balsam
- Nipplewort
- Water forget-me-not
- Yellow pimpernel

### Birds

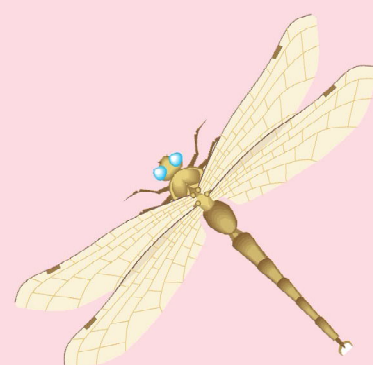
- Buzzard
- House martin
- Heron
- Swallow

### Invertebrates

- Brown dragonfly (large unknown spp)
- Gatekeeper butterfly
- Large white butterfly
- Peacock butterfly
- Painted lady butterfly
- Red Admiral butterfly
- Tortoiseshell butterfly



**Right:**  
**Peacock**  
**Butterfly.**  
**Below:**  
**Feverfew.**



# Walk 7: Meir Heath to Tittensor

